



MANUFACTURER OF EQUIPMENT AND SPARE PARTS FOR THE SUGAR, CEMENT AND MINING INDUSTRIES



**BUILT FOR
PERFORMANCE**



**ENGINEERED FOR
RELIABILITY**



**MADE TO
ENDURE**





» ABOUT US

KOLHAPUR AUTO WORKS PVT LTD, PART OF THE KAW GROUP, HAS OPERATED ITS BUSINESS SINCE 1962 AND IS A WORLD LEADER IN THE MANUFACTURE, SUPPLY AND EXPORT OF A WIDE PRODUCT RANGE OF EQUIPMENT AND SPARE PARTS FOR THE SUGAR, CEMENT AND MINING INDUSTRIES. OUR PRODUCTS ARE MANUFACTURED IN OUR STATE-OF-THE-ART 60,000 SQ FT MACHINE SHOP AND FOUNDRY. OUR PRODUCTS AND SERVICES ARE ACKNOWLEDGED FOR THEIR EXCEPTIONAL QUALITY, DURABILITY AND RELIABILITY AND DELIVERED TO CUSTOMERS AT A COMPETITIVE PRICE.



» MISSION, VISION & VALUES

REVOLUTIONISING THE MANUFACTURING INDUSTRY THROUGH INNOVATION, PRECISION AND EXCELLENCE. WE ARE A GLOBAL LEADER IN DELIVERING CUTTING-EDGE MANUFACTURING SOLUTIONS.



OUR MISSION

K-KNOWLEDGE BASED MANUFACTURING
A-ACCELERATED DELIVERIES
W-WORKMANSHIP EXCELLENCE
L-LIFETIME COMMITMENT TO OUR CUSTOMERS



OUR VISION

GUIDED BY A RELENTLESS FOCUS ON,
QUALITY, TECHNOLOGY & AUTOMATION



OUR VALUES

INTEGRITY, QUALITY & RELIABILITY - DELIVERING
EXCELLENCE THROUGH TRUST, INNOVATION &
COMMITMENT



CEMENT

EQUIPMENT AND SPARE PARTS



BELT CONVEYOR



CRUSHER



IMPELLER



WHITE METAL BEARING LINERS



WHITE METAL BEARING HOUSING



BEARING PEDASTAL



ROLLER



DUST COLLECTOR & DUCT COMPONENT



SHAFT



GEAR & PINION



SPROCKET



GIRTH GEAR & RING GEAR



CEMENT

EQUIPMENT AND SPARE PARTS



BRONZE PLATE



WEAR BARS & STRIPS



FLANGE



CLAMP ASSEMBLIES



CONICAL & FLANGE RINGS



RUBBER LAGGED ROLLER



SPECIAL CASTINGS & FABRICATED PARTS



CHAIN LINK ASSEMBLY



CONVEYOR CHAIN



SCRAPER BLADES & HOLDERS



SLAT AND CHAIN ASSEMBLY



BRONZE BUSHES



MINING

EQUIPMENT AND SPARE PARTS



CONE CRUSHER



MANTLE & CONCAVE LINER



IMPELLERS & ROTOR



PEDESTAL & BRACKET



FLANGES



BUSHES & BEARING



SCREEN PLATE & GRIZZLY BARS



HAMMERS & IMPACTORS



SHAFT



ADAPTER & BACKING RING



GEAR BOX & HOUSING COMPONENT



SPRINGS



MINING

EQUIPMENT AND SPARE PARTS



LINK



ROCKER LEVER



SHOVEL ADAPTER



WEAR BLOCKS



WEAR BARS



SIDE LINERS



CRUSHER



CONVEYOR ROLLERS



WEAR SKIDS



CONVEYOR CHAINS



CHAINS



SLAT CONVEYORS

SUGAR

EQUIPMENT AND SPARE PARTS



KAW
INDUSTRIES



CANE FEEDER



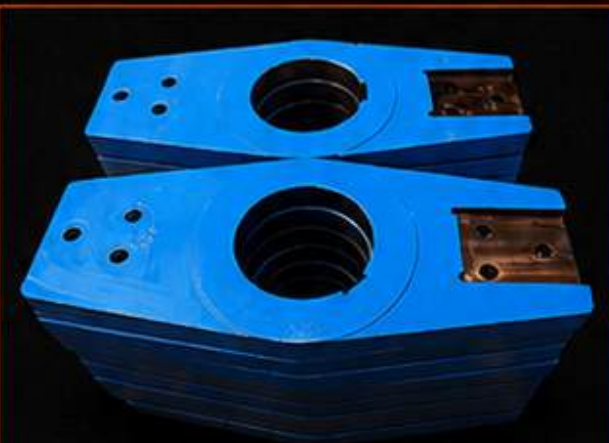
CHOPPER ASSEMBLY



SHREDDER ROTOR



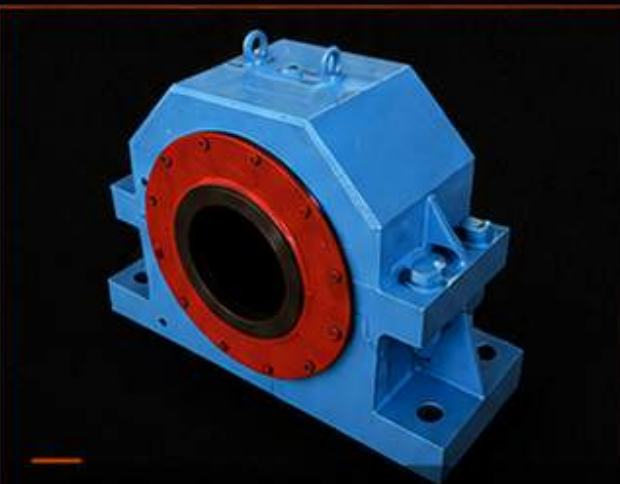
CC DRIVE SHAFT ASSEMBLY



CANE CUTTER HUBS



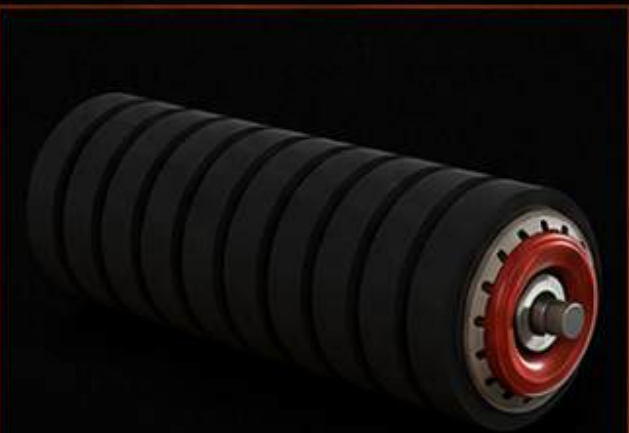
CUTTER KNIVES



BEARING HOUSING



HAMMER



CONVEYOR ROLLER



CHAIN



CONVEYOR CHAINS



SLAT ASSEMBLY

SUGAR

EQUIPMENT AND SPARE PARTS



KAW
INDUSTRIES



MILL HEADSTOCK



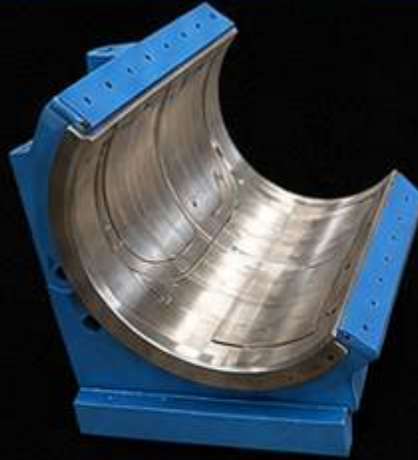
MILL ROLLER



TOOTHED ROLLER



CS BEARING WITH BRONZE LINER



CS BEARING WITH BRONZE LINER



SPLIT BEARING HOUSINGS



BRONZE BEARING LINER



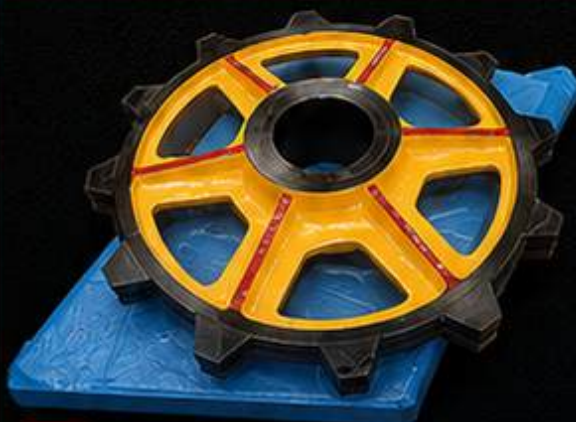
BRONZE BEARINGS



BRONZE PLATE



WORM AND WORM WHEEL



SPROCKET



CROWN PINION

SUGAR

EQUIPMENT AND SPARE PARTS



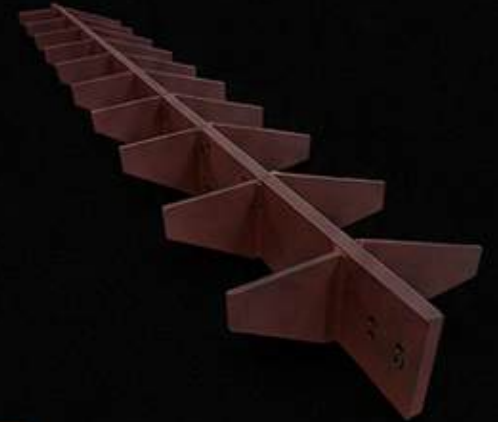
KAW
INDUSTRIES



MILL COUPLING



TURF SCRAPER



RAKE



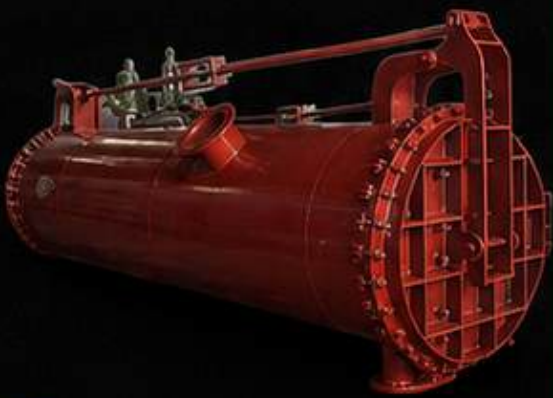
TRASH BEAM



TRASH PLATE



SCRAPER PLATE



JUICE HEATER



PUG MILL



MINGLERS



VACUUM MUD FILTER



PAN CALENDRIA



FIBRIZER/SHREDDER ANVIL PLATE

SUGAR

EQUIPMENT AND SPARE PARTS



KAW
INDUSTRIES



SINGLE ENTRY CONDENSOR



EVAPORATORS



VERTICAL CRYSTALLIZER



AIR COOLED CRYSTALLIZER



VACUUM CRYSTALLIZER



BATCH PAN

TESTING EQUIPMENT



PORTABLE HARDNESS TESTING MACHINE



HARDNESS TESTER



ULTRA SONIC TESTING MACHINE



TENSILE TESTING MACHINE



SPECTROMETER



MOTORISED HYDRO TESTING MACHINE



OUR PRESENCE IN 17+ COUNTRIES



➤ KOLHAPUR AUTO WORKS PVT. LTD. INDIA

MANUFACTURERS & EXPORTERS OF FERROUS AND NON FERROUS COMPONENTS & SPARES TO THE SUGAR, CEMENT & MINING INDUSTRIES.

✉ admin@kopauto.com

☎ [+91 85509 96159](tel:+918550996159)

📍 GAT NO. 287/A/2, VIJAYNAGAR GOKUL SHIRGAON MIDC, KOLHAPUR - 416234 (MH) INDIA.

🌐 WWW.KOPAUTO.COM

➤ KAW INDUSTRIES, AUSTRALIA

ABN: 52526773298

✉ admin@kawindustries.com.au

☎ [+61 419721224](tel:+61419721224)
PHONE, WHATSAPP, TEAMS, ZOOM

🌐 WWW.KAWINDUSTRIES.COM.AU





OUR QUALITY AND CERTIFICATION

OUR QUALITY POLICY IS DEFINED & STRONGLY DRIVEN BY THE FOLLOWING MANAGEMENT PRINCIPLES & BEHAVIOURS:



1. BUILD A mutually profitable relationship with our customers ensuring their long-term success through the understanding of customers needs and requirements.



2. ACHIEVE Our commitment to quality, cost and on-time delivery.



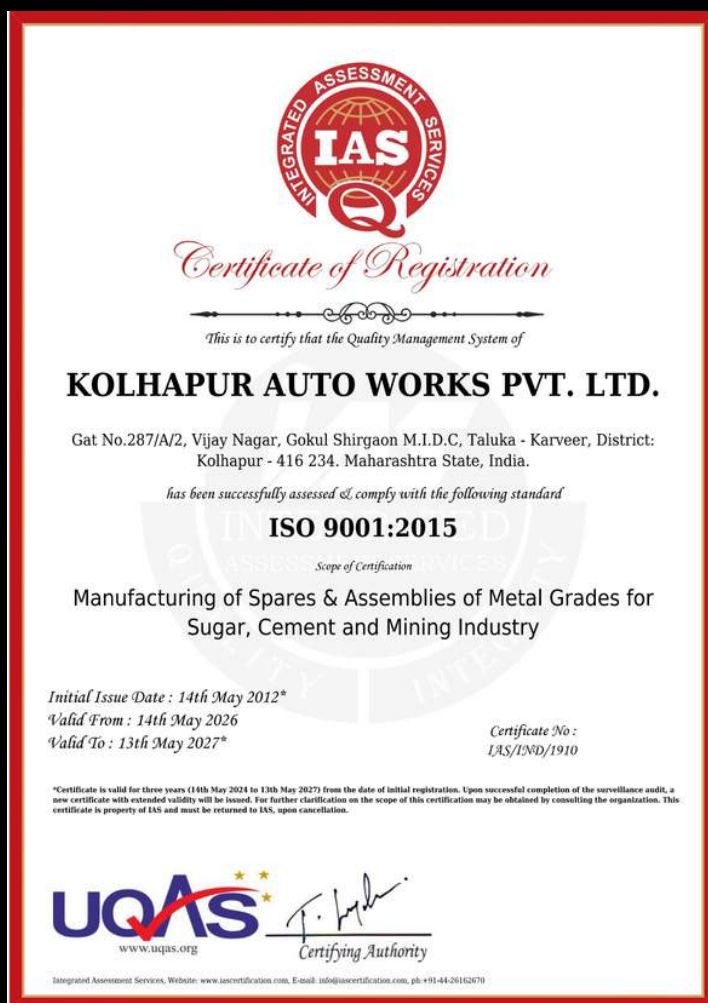
3. ENSURE Reliable and effective risk management through utilising systematic research and best practice preventative procedures.



4. DRIVE Continual improvement and innovation through efficient business processes, well-defined measurements, best practices, state of the art machinery and customers surveys.



5. DEVELOP Staff competencies, creativity, empowerment and accountability through appropriate professional development programs and the demonstration of strong management involvement and commitment.



KOLHAPUR AUTO WORKS PVT LTD continually strives to be the best manufacturer and exporter in the industries in which we operate, through adherence to the guiding principles outlined, everyone in the company is accountable for fully satisfying our customers by meeting or exceeding their needs and expectations with best-in-class manufacturing processes and services.

**QUALITY YOU CAN TRUST. SERVICE YOU CAN DEPEND ON.
EVERY COMPONENT. EVERY PROJECT. EVERY TIME.**